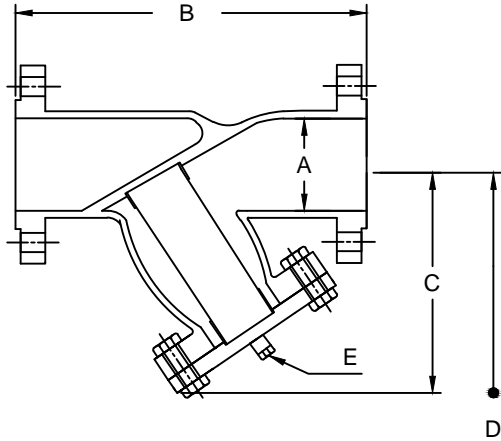




## Cast Iron Y Strainer

Teleflo Strainers and Pressure Vessels



### Features:

- Sizes from 15nb to 300nb.
- End Connections are as per ANSI B16.5 125lbs SORF.
- Free straining area of 4 times pipe cross section area is standard.
- Covers with Drain and Drain plug are Standard.
- Mechanical guide on body and cover standard.
- Differential tapings on request.
- Quick Closing Cover can be supplied on request.

Dimensional Data												
Size	A		B		C		D		E (NTP)		Weight	
	Class 125	Class 250	Class 125	Class 250	Class 125	Class 250	Class 125	Class 250	Class 125	Class 250	Class 125	Class 250
nb	mm	mm	mm	mm	mm	mm	mm	mm	mm	mm	kg	kg
50	51	51	226	226	152	165	216	232	15	15	10	13
65	64	64	273	289	203	178	286	251	25	25	16	17
80	76	76	292	295	222	203	311	286	25	25	16	17
100	102	102	353	368	241	273	340	381	32	25	34	50
125	127	127	416	441	292	343	410	486	32	32	52	73
150	152	152	470	476	321	413	449	578	40	40	70	102
200	203	203	543	556	416	495	584	692	40	40	110	212
250	254	254	660	692	483	540	678	756	50	50	177	268
300	305	305	762	797	559	635	787	889	50	50	177	268
350	356		949		737		1041		50		370	
400	406		1080		838		1168		50		555	

Dimensions are subjected to change.  
Ask for certified drawing while ordering.

### Note:

1. Ductile Iron (SG) Castings can be supplied with similar dimensions.
2. Epoxy coating can be done on request.
3. Enamel Paint on red oxide base primer standard.

### Screen

- 50-200nb - 3.2mm hole diameter X 0.75 mm thick.
- 250 - 300nb - 3.2mm hole diameter X 1.5 mm thick.
- 350-400nb - 4.8mm hole diameter X 3.0 mm thick.
- Other screens and linings on request.

Tel : +91-44-42125518  
Help line : +91-9884063432

Fax: +91-44-42669305

www.teleflo.co.in  
www.teleflostrainers.com

E-mail: sales@teleflo.co.in