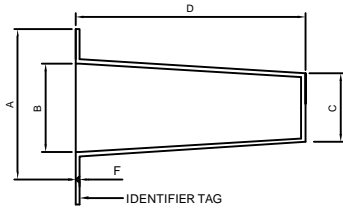




# Temporary Strainer

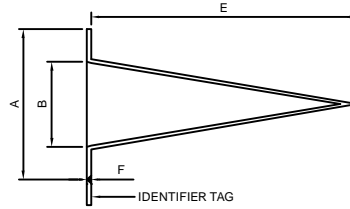
Teleflo Strainers and Pressure Vessels

## BASKET TYPE



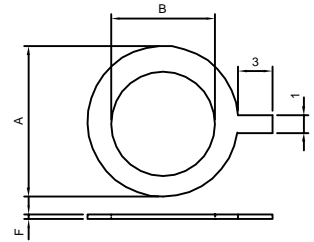
BT Series

## CONICAL TYPE



CT Series

## PLATE TYPE



PT Series

Dimensional Data							
Size (nb)	A (OD) (mm)	B (ID) (mm)	C (mm)	D (mm)	E (mm)	F (mm)	Weight (Kg)
	150#			BASKET LENGTH)	CONE LENGTH)		
20	54	16	8	19	29	3	0.2
25	64	19	10	29	41	3	0.2
40	83	32	16	38	56	3	0.2
50	102	44	22	51	76	3	0.2
65	121	57	29	56	81	3	0.5
80	133	70	35	70	102	3	0.5
100	171	95	48	89	130	3	0.9
125	194	117	59	114	165	3	0.9
150	219	137	68	140	207	3	1.4
200	276	187	94	178	259	3	2.3
250	337	238	119	219	330	3	3.2
300	406	279	140	267	406	3	5
350	441	311	156	292	432	3	5.4
400	511	356	178	356	508	3	7.3
450	540	400	200	406	584	3	9.1
500	597	445	222	432	635	3	11.8
600	708	540	270	533	762	3	13.6
• Thicker Material available upon request . Please contact Factory.							
• Strainers are available in many materials with many different screen openings.							
• Other sizes available on request.							
• Different mesh lining possible on request.							

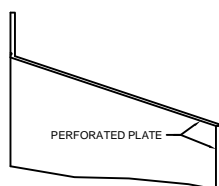
### Features:

- Sizes from 20nb to 1200nb
- Used for new pipeline start-up.
- Filtration as fine as 40 microns available.
- Available in conical, basket and plate configurations.
- Available in flat faced and raised face.
- MOC : SS304, SS 316, Monel.
- May be installed in horizontal or vertical pipelines with cone pointed upstream or downstream.
- Strainer size and pressure rating is stamped on handle.

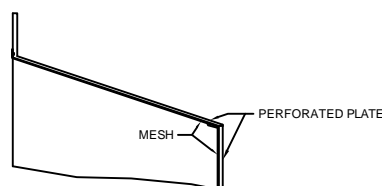
### Screen

- 50-200mm - 3.2mm hole diameter X 0.75 mm thick
- 250 - 300mm - 3.2mm hole diameter X 1.5 mm thick
- 350-400mm - 4.8mm hole diameter X 3.0 mm thick
- Other screens and linings are on request.

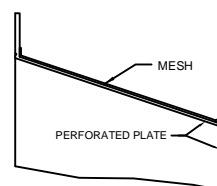
Dimensions are subjected to change.  
Ask for certified drawing while ordering.



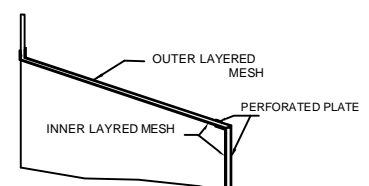
PERFORATED PLATE



MESH INSIDE FLOW INSIDE TO OUT



MESH OUTSIDE FLOW OUTSIDE TO IN



MESH LINED BI- DIRECTIONAL FLOW